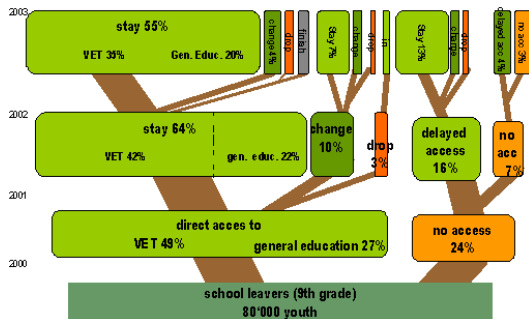




## VET in Switzerland: Transition from compulsory school and future evolution of the number of first year students

### Educational pathways on the transition to the secondary level II



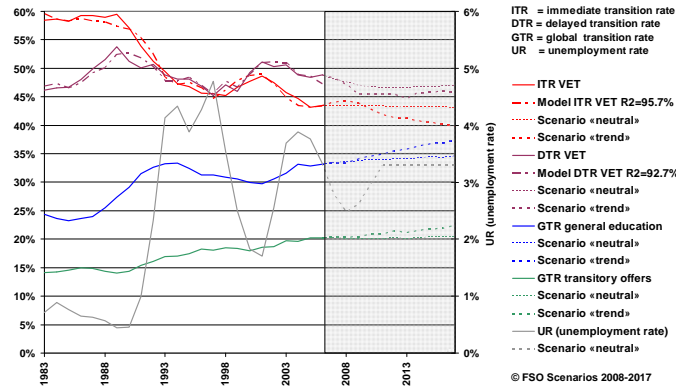
A representative snapshot: Tree diagram for the cohort 2000.

© TREE (Transitions from Education to Employment) 2009

### A complex transition

Due to the high number of non-linear pathways, the number of first year students at the secondary level II equals about 150% of the number of school leavers.

### Transition rates from compulsory school to the secondary level II



### Linear regression models:

ITR VET: negative trend, neg. correlation with UR

ITR = 0.52 (±0.03)  
- 0.0031 (±0.0004) t  
- 1.68 (±0.19) UR

≈ -250 apprentices yearly,  
-1400 (±150) apprentices  
per additional point of UR

DTR VET: +200, -600 (±130)  
GTR VET: -50, -2000 (±200)

GTR general education:  
pos. trend, no corr. with UR

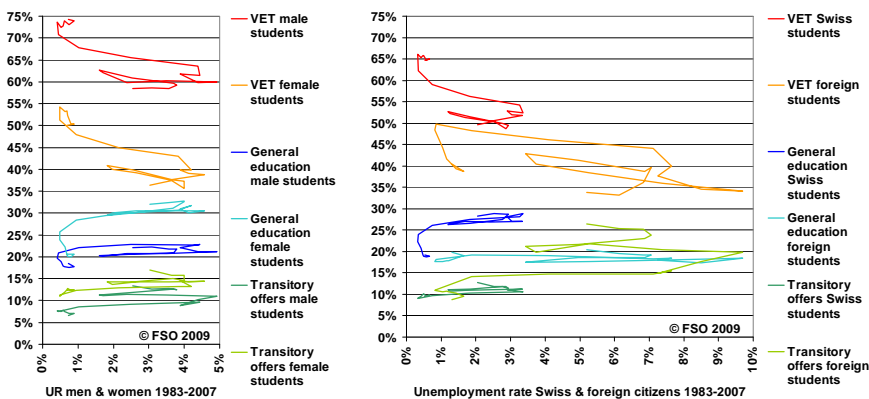
GTR transitory offers:  
pos. trend, pos. corr. with UR

© FSO Scenarios 2008-2017

### A dynamic transition

The main factor determining the number of first year students at the secondary level II is the demographic evolution. Furthermore the transition rates vary over time under the influence of structural trends (labour market developments, changes in young people's choices, ...), the economic situation, the institutional context, etc.

### Immediate transition rates (ITR) to the secondary level II for male & female students and for Swiss & foreign students (work in progress)



ITR + logit analyses of the number of first year VET students including the dimensions ISCED field (broad group), length of the training period, main region and other relevant variables

To date the analyses show at most weak effects of time and of the economic situation on the proportion of female and of foreign apprentices:

- The ITR to VET are higher for male than for female school leavers, while the ITR to general education and to transitory offers are lower.

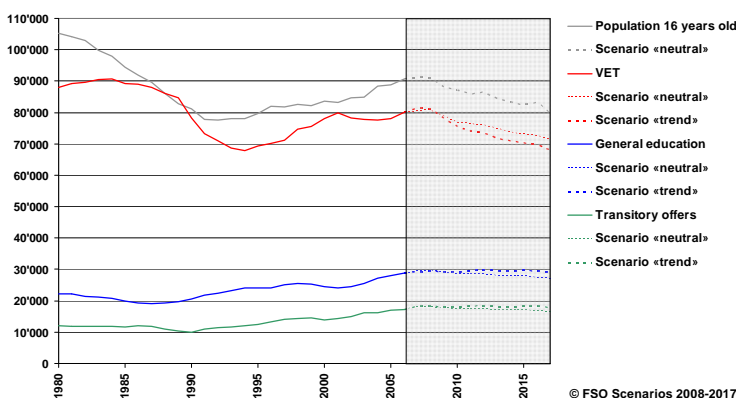
The proportion of female apprentices seems however to increase gradually over time independently of the training field:  
odds ratio estimate ≈ 1.007 (±0.001) per year.

The number of female apprentices also seems to react more strongly to economic changes than the number of male apprentices:  
odds ratio estimate ≈ 0.969 (±0.003) per additional point of unemployment.

- The ITR to VET and to general education are higher for Swiss than for foreign school leavers, while the ITR of foreign school leavers to transitory offers has grown considerably over the last 20 years.

Up to this point no significant results seem to be present for the impact of the economic situation on the proportion of foreign apprentices.

### Past and future evolution of the number of first year students at the secondary level II (forecasts according to FSO scenarios 2008-2017)



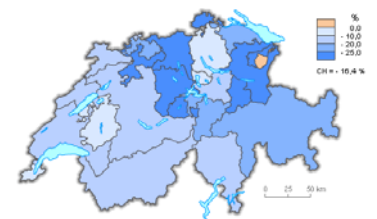
Expected evolution 2007-2017 of the number of school leavers by Swiss canton

© FSO ThemaKart 2008  
(interactive flash map available on [www.eduperspectives-stat.admin.ch](http://www.eduperspectives-stat.admin.ch))



Expected evolution 2007-2017 of the number of first year VET students by Swiss canton according to the scenario «trend»

© FSO ThemaKart 2008  
(interactive flash map available on [www.eduperspectives-stat.admin.ch](http://www.eduperspectives-stat.admin.ch))



### Some conclusions

Since 2004 the FSO has published scenarios each year for the whole Swiss education system, which comprise forecasts for the secondary level II including VET.

The analysis of the surveys of the past 25 years enables us to estimate transition rates from compulsory school and to model accurately its actual dynamics.

To date the mean absolute percent error (MAPE) for the forecast of the number of first year VET students at the national level has been less than 1.0% for a horizon of 1 to 4 years (scenario «trend»).

Despite quite different contexts, the same factors have similar effects on the transition rates in all seven main regions of Switzerland:  
The ITR to VET has been decreasing, while the DTR increased at a slower rate and both correlate negatively with the economic situation.

Girls are less likely than boys to begin VET when they leave compulsory school; however they seem to gradually raise their participation to VET independently of the training field and to be stronger hit by economic decline.